



2006 Illinois School Profile

A Brief Guide for Parents

This Profile provides information about our school's students, teachers, student test scores, class sizes and district's budget. For more details, please contact school staff or go to the Illinois State Report Card link on the ISBE web site: www.isbe.net.

EAST DUBUQUE HIGH SCHOOL
 EAST DUBUQUE USD 119
 EAST DUBUQUE, ILLINOIS
 Grades: 9 10 11 12
 RCDTS Code: 08-043-1190-22-0003

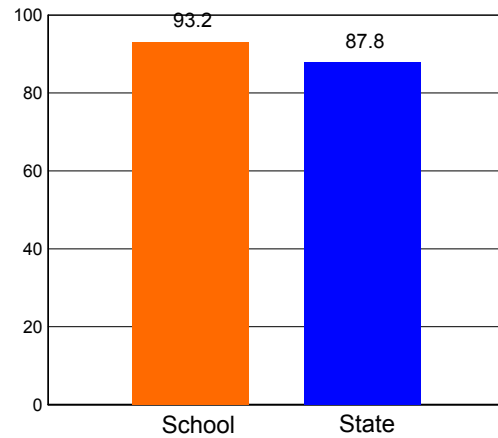
Key Statistics

Number of Students	200
Attendance Rate	95.9

AVERAGE CLASS SIZE

	School	State
Kindergarten		
Grade 1		
Grade 2		
Grade 3		
Grade 4		
Grade 5		
Grade 6		
Grade 7		
Grade 8		
High School	14.9	19.7

HIGH SCHOOL GRADUATION RATE



Student Information

RACIAL/ETHNIC BACKGROUND (%)

	School	State
White	96.5	55.7
Black	1.5	19.9
Hispanic	0.0	18.7
Asian/Pacific Islander	0.0	3.8
Native American	0.0	0.2
Multiracial/Ethnic	2.0	1.8

ADDITIONAL INFORMATION (%)

	School	State
Low Income	12.5	40.0
Limited English Proficient	0.0	6.6
Mobility	10.5	16.0





Teacher Information

	District *	State
Average Teaching Experience (Years)	15.6	13.0
% Teachers with Emergency or Provisional Credentials	6.0	1.6
Average Teacher Salaries	\$43,989	\$56,685
% Teachers with Graduate Degrees	24.0	50.6

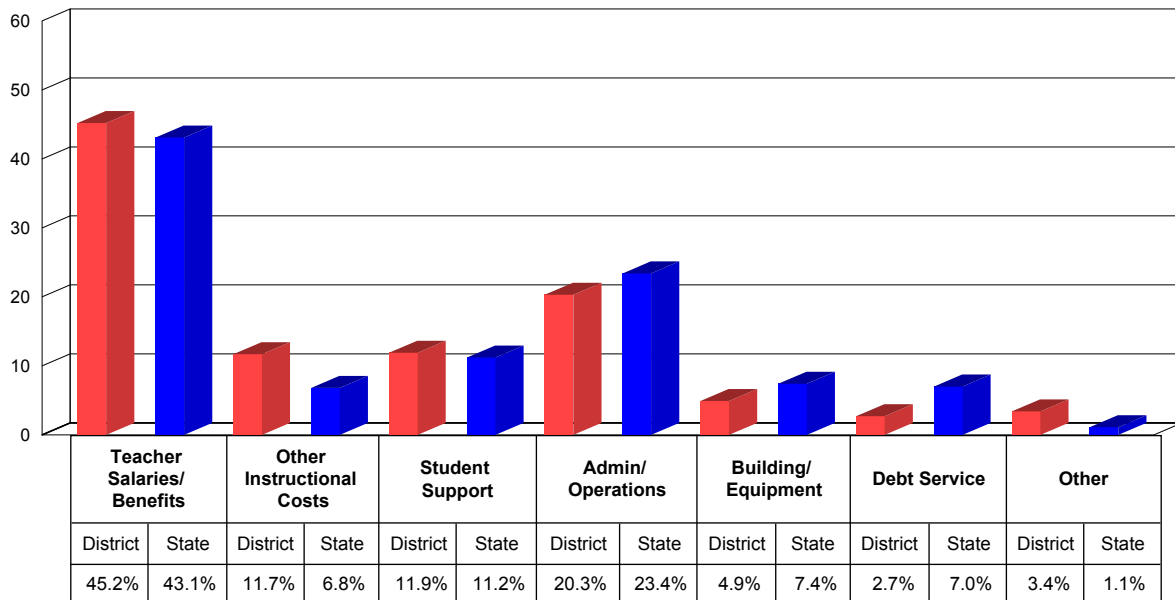
* These represent school level data in the case of charter schools.



School District Finances

This chart shows how we spent our money as a district in the 2004-05 school year. Instructional costs include books and classroom materials. Student support includes counseling, transportation and food service. Administration/operations includes principal salaries and the cost of janitorial services. Building/equipment and debt service include the costs of school facilities.

DISTRICT SPENDING

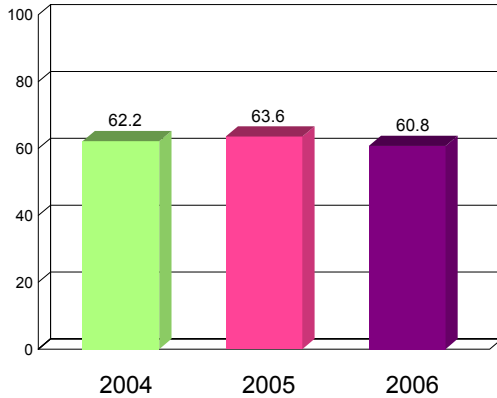




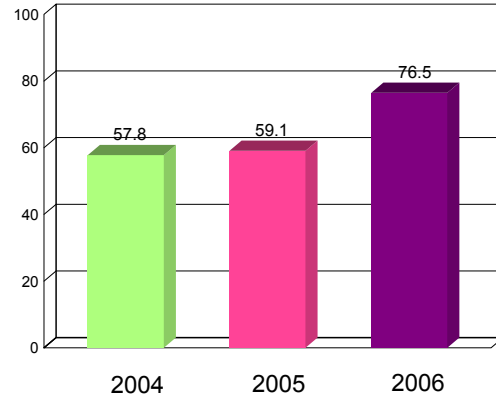
How our students do on state tests is just one way to measure their academic achievement. You can compare the percentage of our students that meet or exceed standards on statewide tests to the statewide percentage. You should also look at how this year's results compare to previous years'. The Illinois Standards Achievement Test (ISAT) is the state test administered to students in selected elementary grades. The Prairie State Achievement Examination (PSAE) is the state test that students take in the 11th grade.

GRADE 11 PSAE - READING AND MATHEMATICS (PERCENT MEETING OR EXCEEDING STANDARDS)

GRADE 11 READING



GRADE 11 MATHEMATICS



2006 - Grade 11 PSAE Reading, Mathematics and Science (Percent Meeting or Exceeding Standards)

	Reading	Mathematics	Science
School	60.8	76.5	66.7
State	58.4	53.6	50.8





Adequate Yearly Progress

The No Child Left Behind Act and Illinois law require the State to measure whether our school is making Adequate Yearly Progress (AYP). AYP is based on the percent of students that meet/exceed standards on state tests, both as a whole and by different subgroups. Schools must also meet minimum attendance or graduation rates. If a school does not make AYP in the same subject area for two consecutive years, it is identified for School Improvement.

Is this school making Adequate Yearly Progress (AYP)?	Yes
Is this school making AYP in Reading?	Yes
Is this school making AYP in Mathematics?	Yes

Has this school been identified for School Improvement according to the AYP specifications of the federal No Child Left Behind (NCLB) Act?	No
2006-07 Federal Improvement Status	
2006-07 State Improvement Status	

This School Profile was prepared for you in partnership with the Illinois State Board of Education.



**Illinois State
Board of Education**

Rod Blagojevich, Governor

